

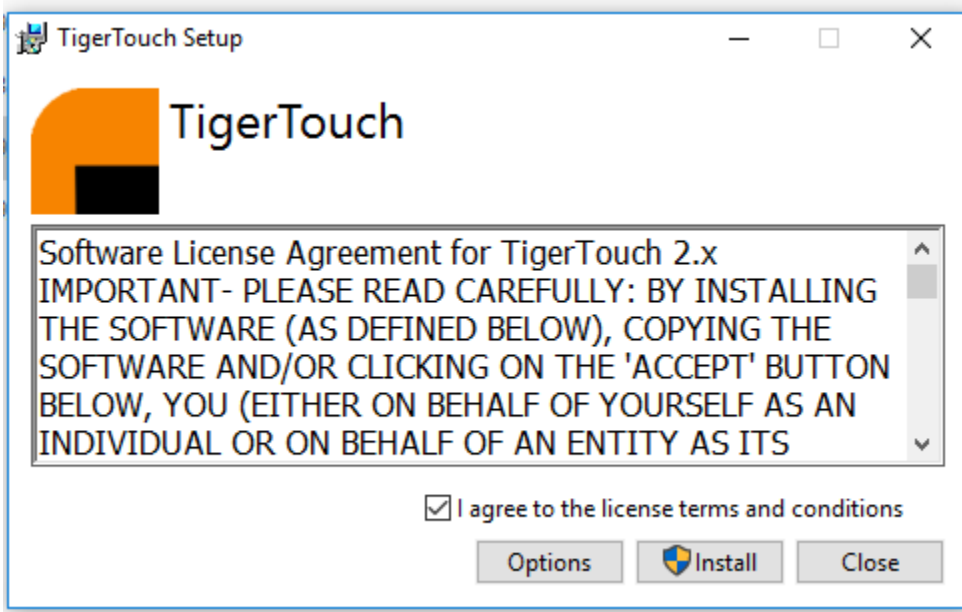
## TigerTouch 2.03 Install Instruction:

**NOTE: These instructions are only for NEW TigerTouch Installs only. If updating your TigerTouch version, simply uninstall the previous version before installing the new version**

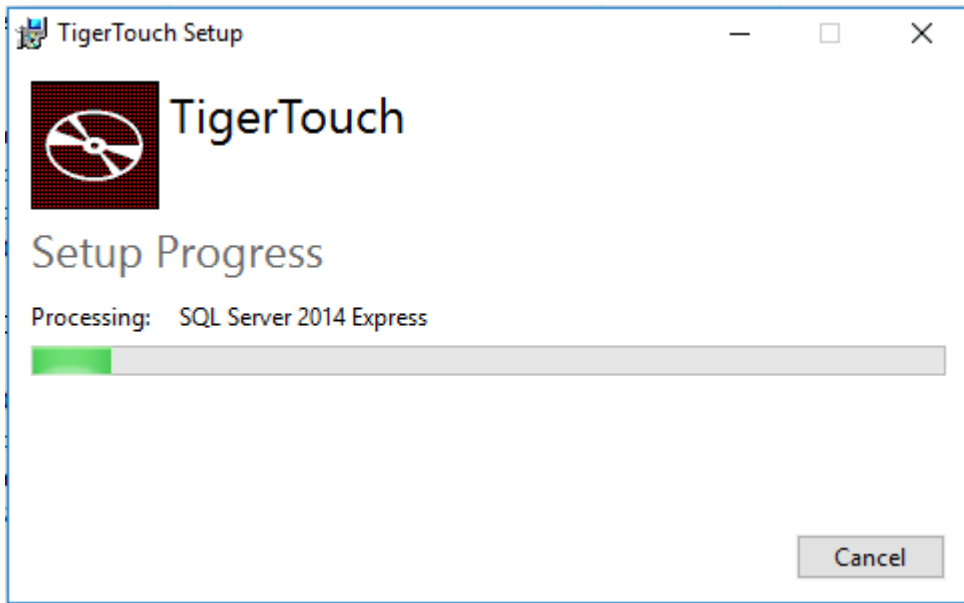
1. Find the TigerTouch 2.03 setup file and double click it to start installation.

 TigerTouch 2.03.0.0 Boot.exe	9/12/2017 2:36 PM	Application	4,582 KB
 TigerTouch 2.03.0.0 Boot.zip	9/12/2017 2:38 PM	Compressed (zipped) F...	4,348 KB

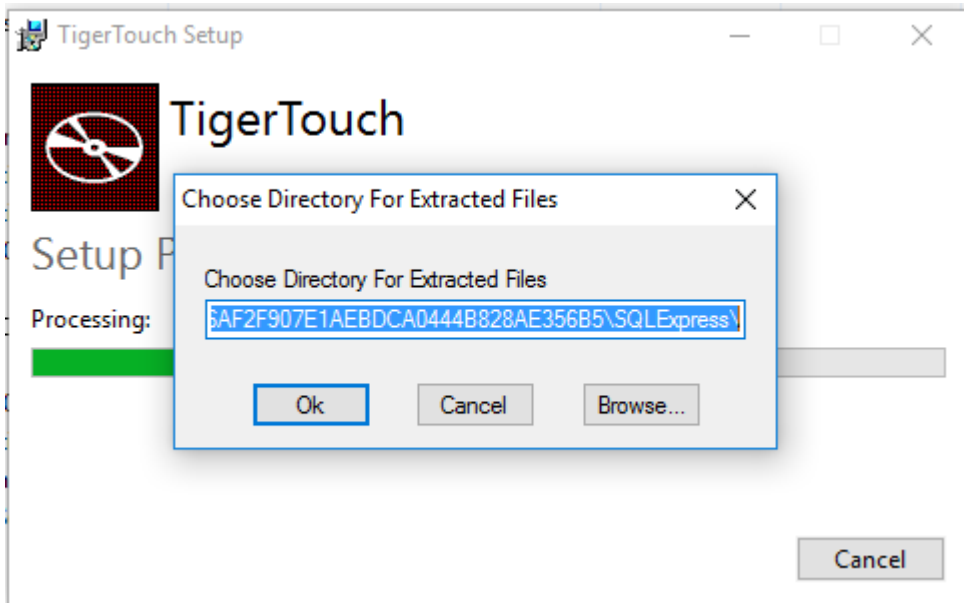
2. A license agreement screen will appear. Click the 'I agree to the license terms and conditions' to mark the check box and click 'Install'.



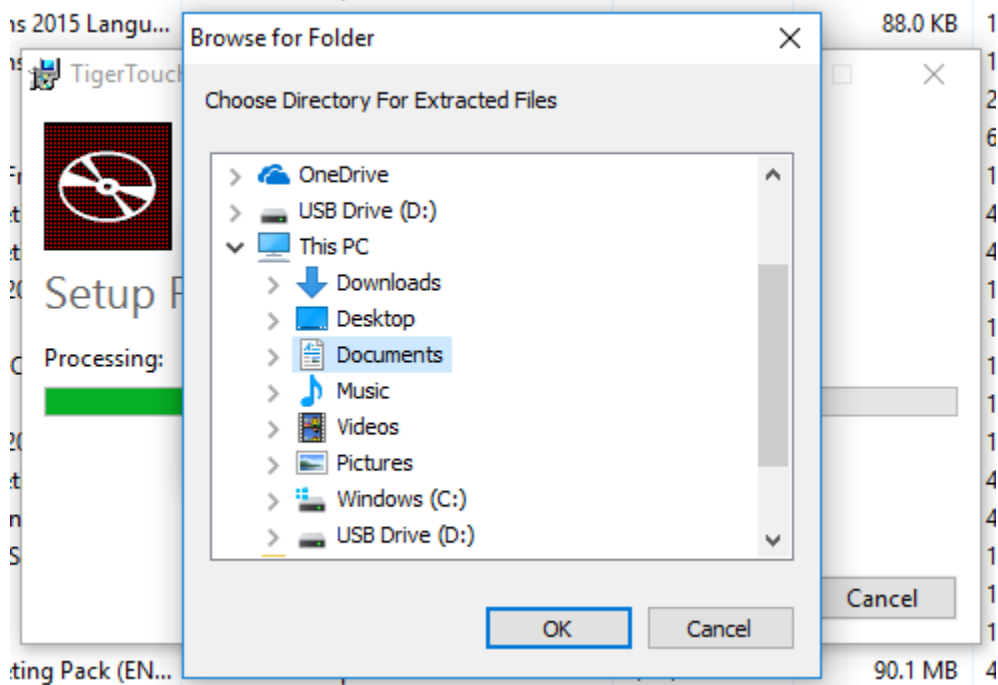
3. Server installation will begin.



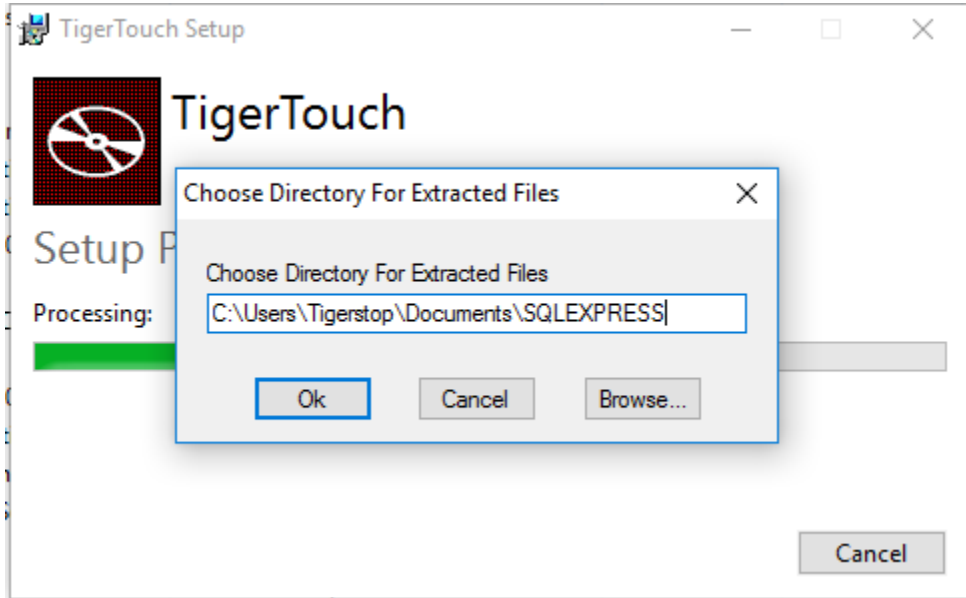
4. After 5-10 seconds, the installer will ask for a file location to extract to.



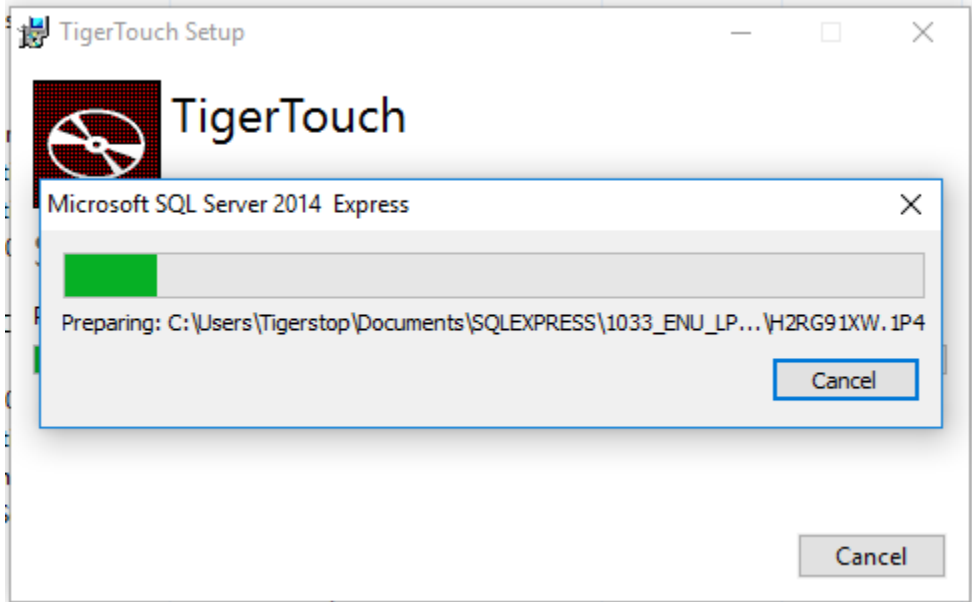
5. Click 'Browse' and select 'Documents' and click 'OK'.



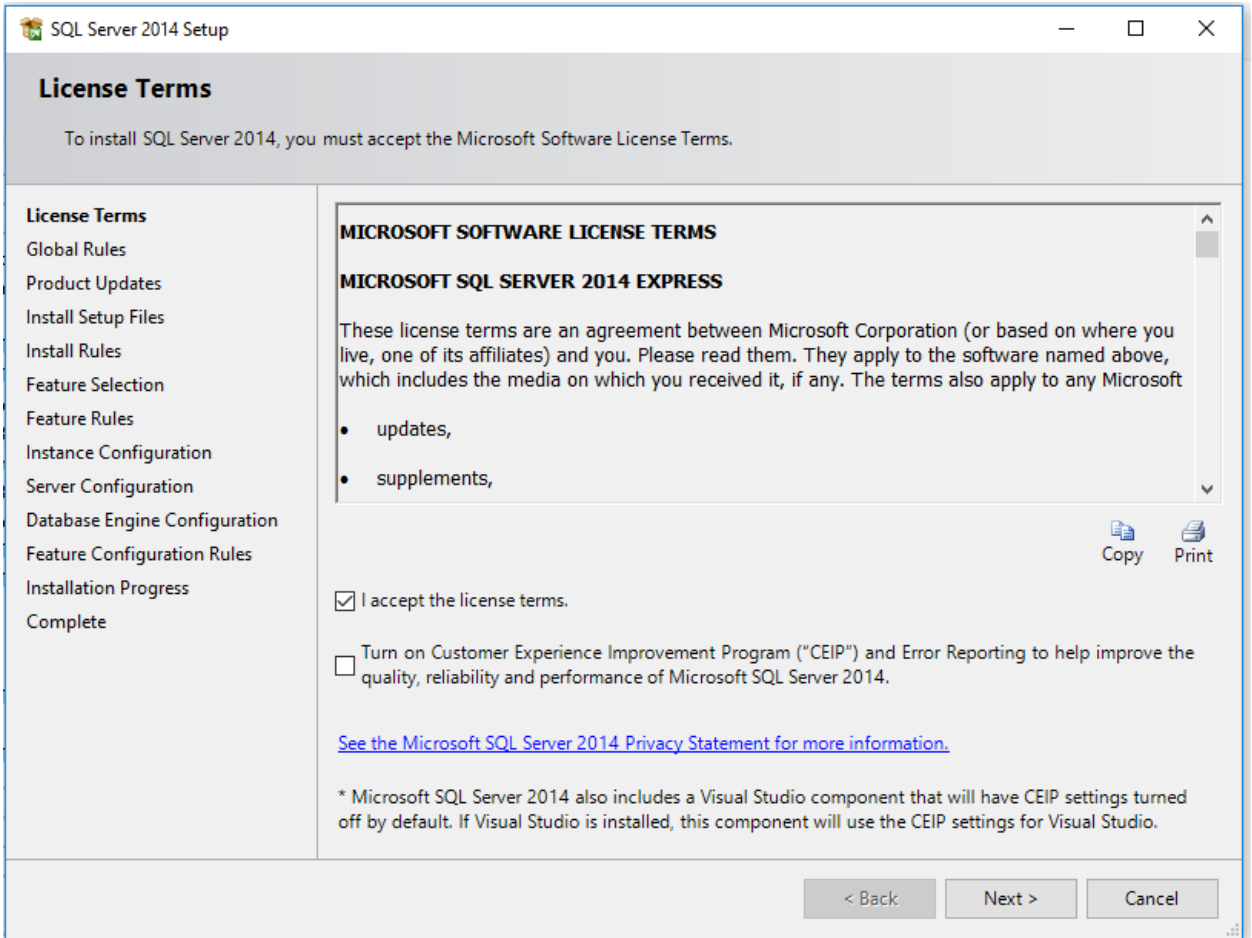
6. Type in '\SQLEXPRESS' on to the end of the file path so that it reads 'C:\Users\Tigerstop\Documents\SQLEXPRESS' and click 'OK'.



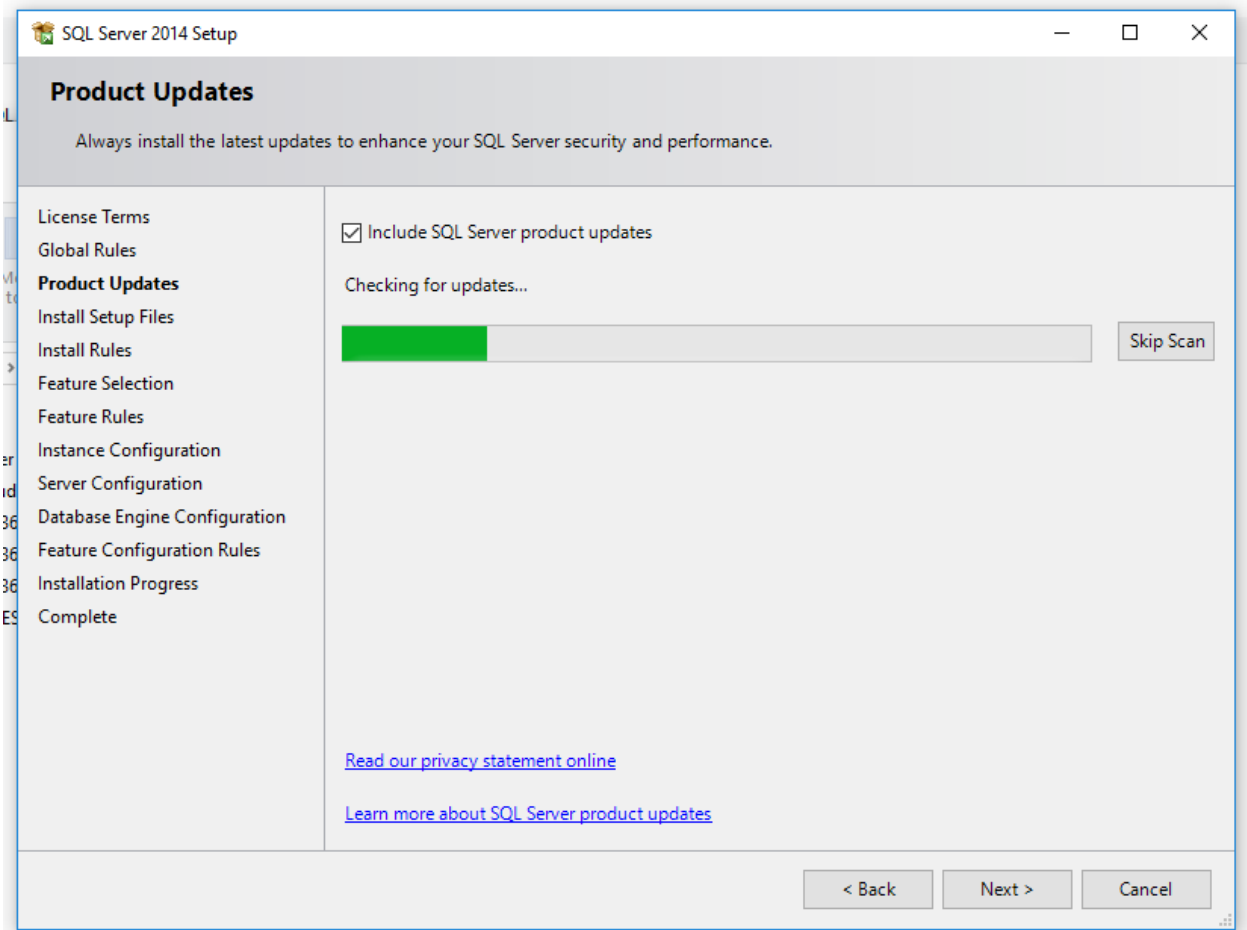
7. The installer will begin extracting files, this will take 10-30 seconds usually.



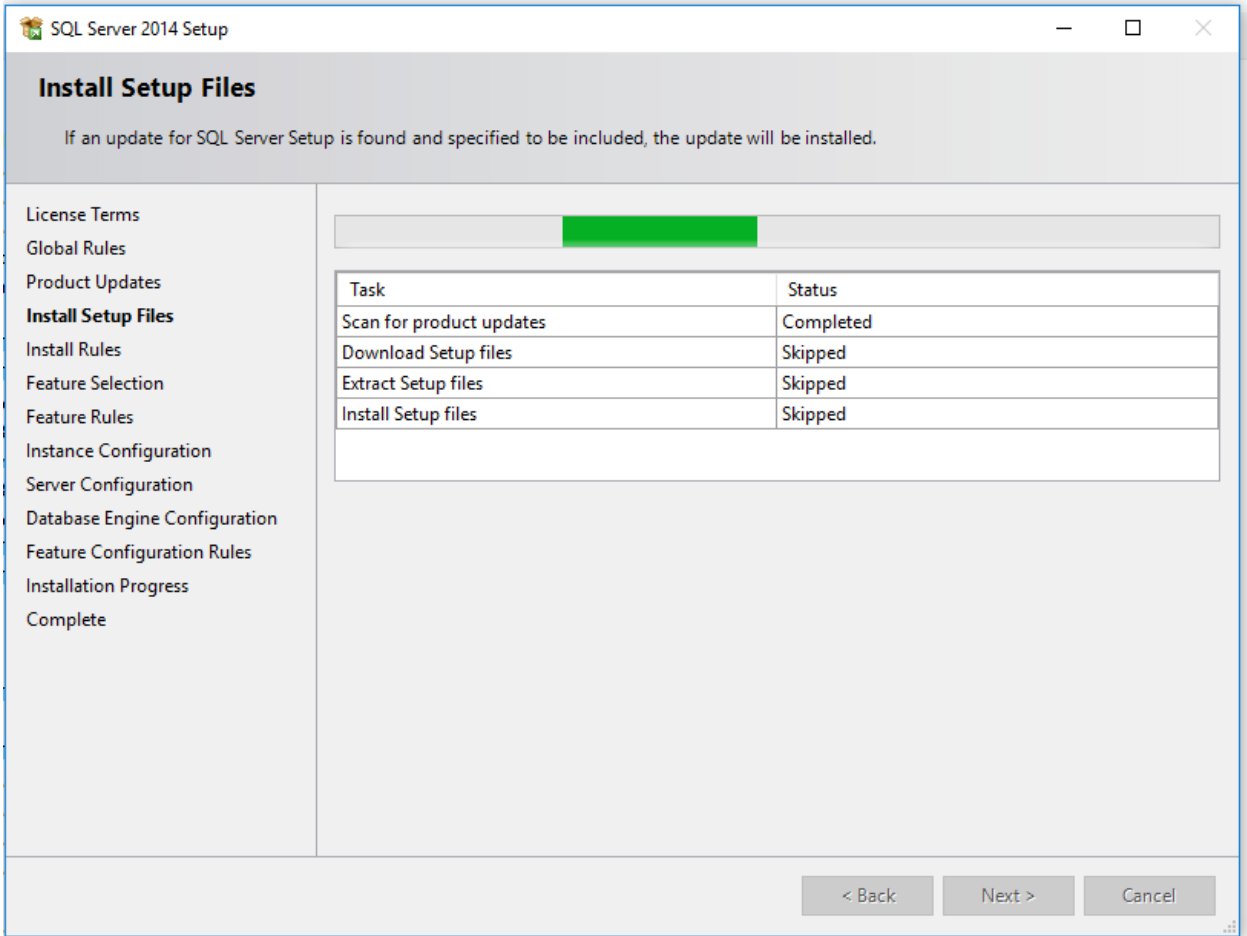
8. The server's installer will open a window to begin configuration. Select 'I accept the license terms' to check the box and click 'Next'.



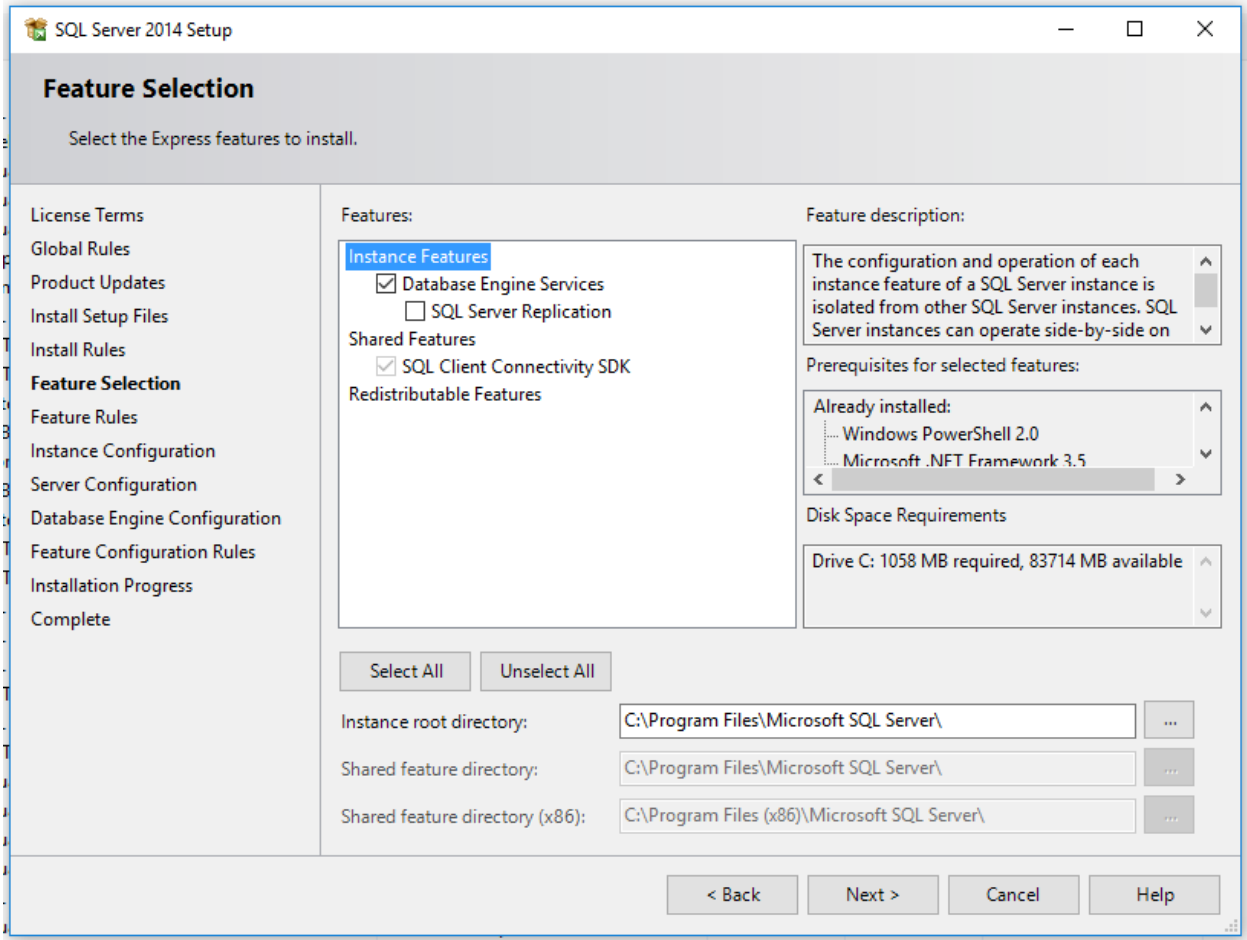
9. The server installer will check 'Global Rules' and show the 'Product Updates' screen. Click 'Next'.



10. The server installer will check 'Install Setup Files', and 'Install Rules' on its own. This takes a 5-10 seconds.



11. The server installer will display the 'Feature Selection' screen. Ensure 'Database Engine Services' are checked. Click 'Next'.



12. The server installer will move to the 'Instance Configuration' screen. Ensure 'Named Instance' is selected and the textbox has 'SQLEXPRESS' filled in. Click 'Next'.



### Instance Configuration

Specify the name and instance ID for the instance of SQL Server. Instance ID becomes part of the installation path.

- License Terms
- Global Rules
- Product Updates
- Install Setup Files
- Install Rules
- Feature Selection
- Feature Rules
- Instance Configuration**
- Server Configuration
- Database Engine Configuration
- Feature Configuration Rules
- Installation Progress
- Complete

Default instance

Named instance:

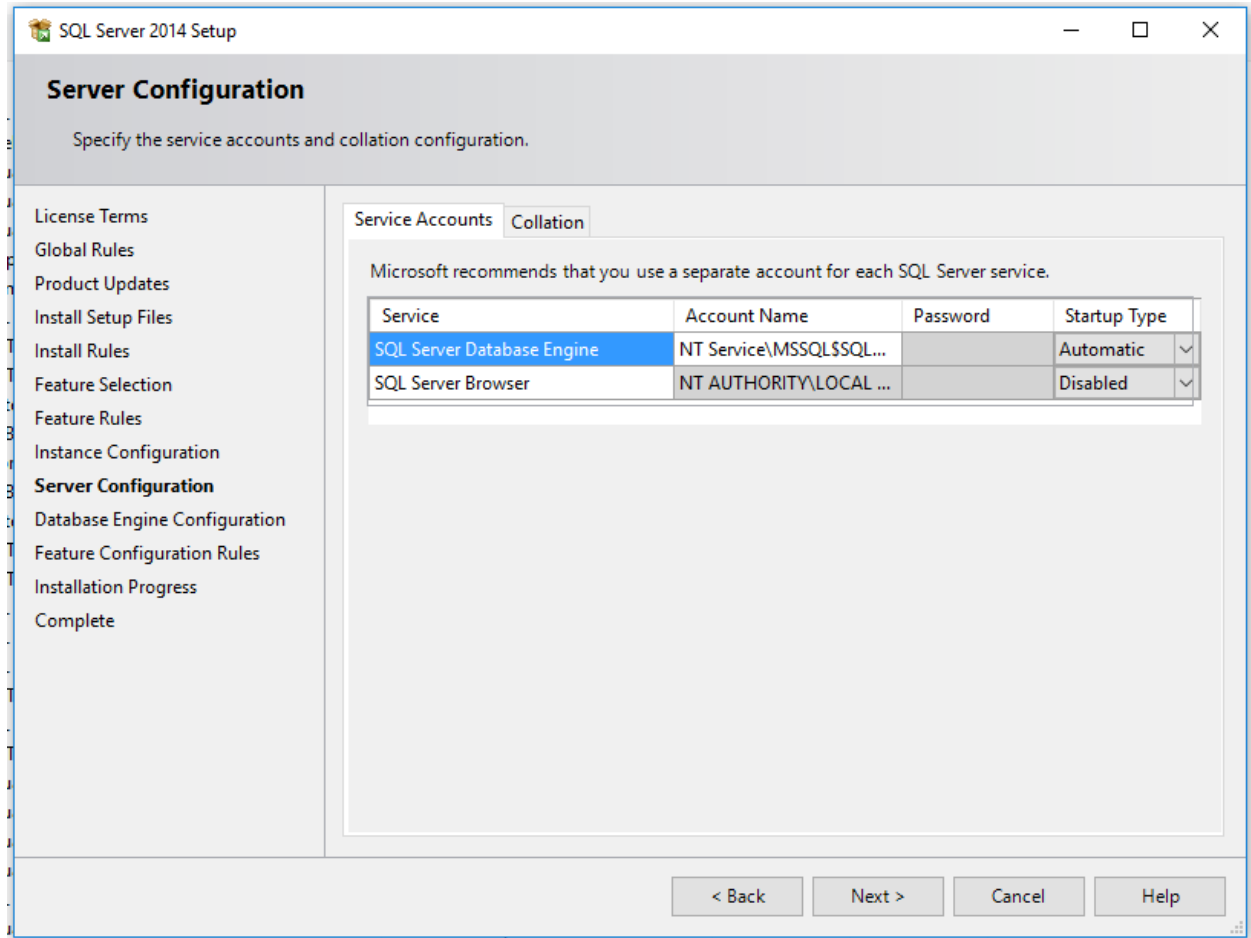
Instance ID:

SQL Server directory: C:\Program Files\Microsoft SQL Server\MSSQL12.SQLEXPRESS

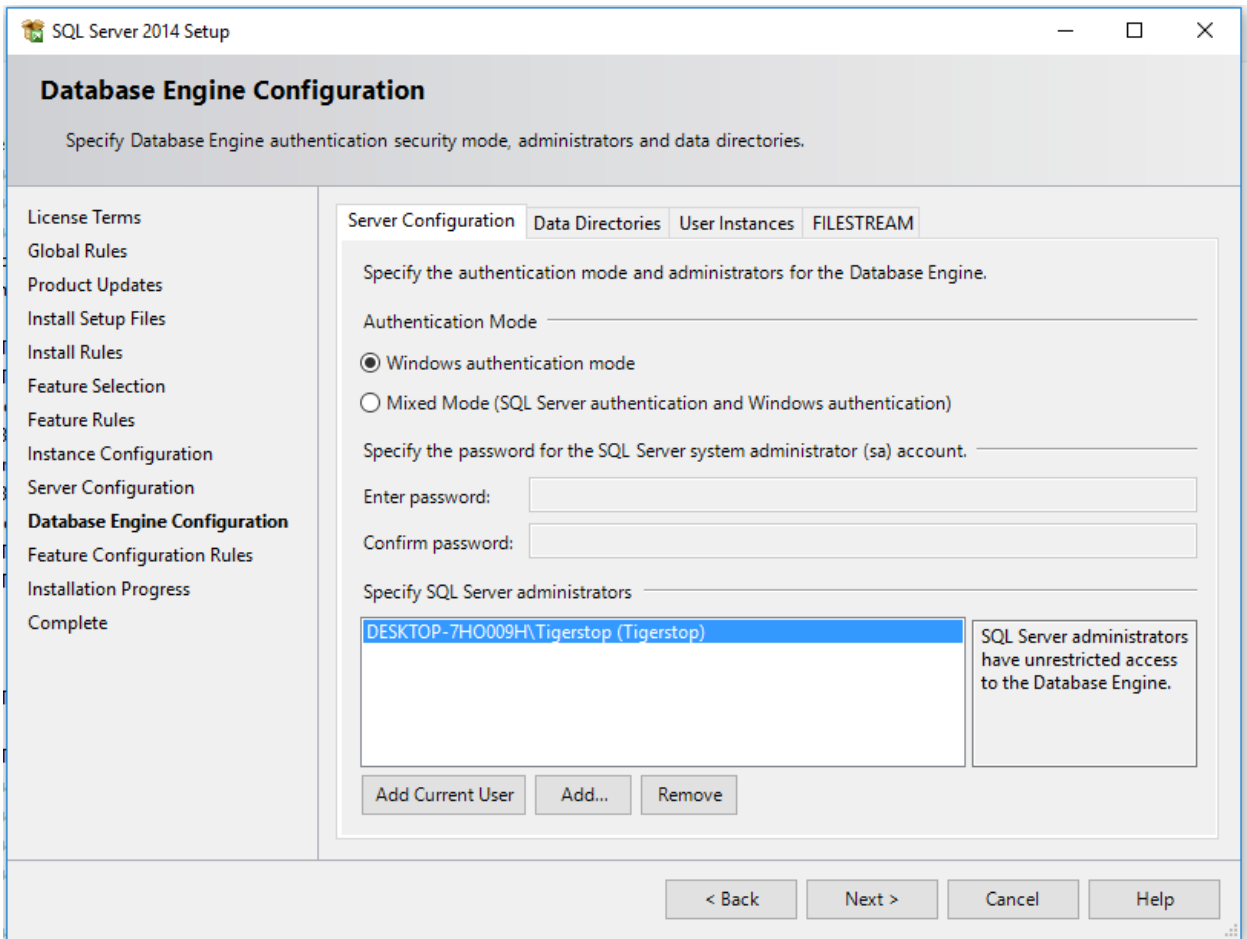
Installed instances:

Instance Name	Instance ID	Features	Edition	Version

13. The server installer will move to the 'Server Configuration' screen. Click 'Next'.



14. The server installer will move to the 'Database Engine Configuration' screen. Ensure 'Windows authentication mode' is selected. Click 'Next'



15. The server installer will move to the 'Installation Progress' screen and begin installing the files. This can take several minutes.

SQL Server 2014 Setup

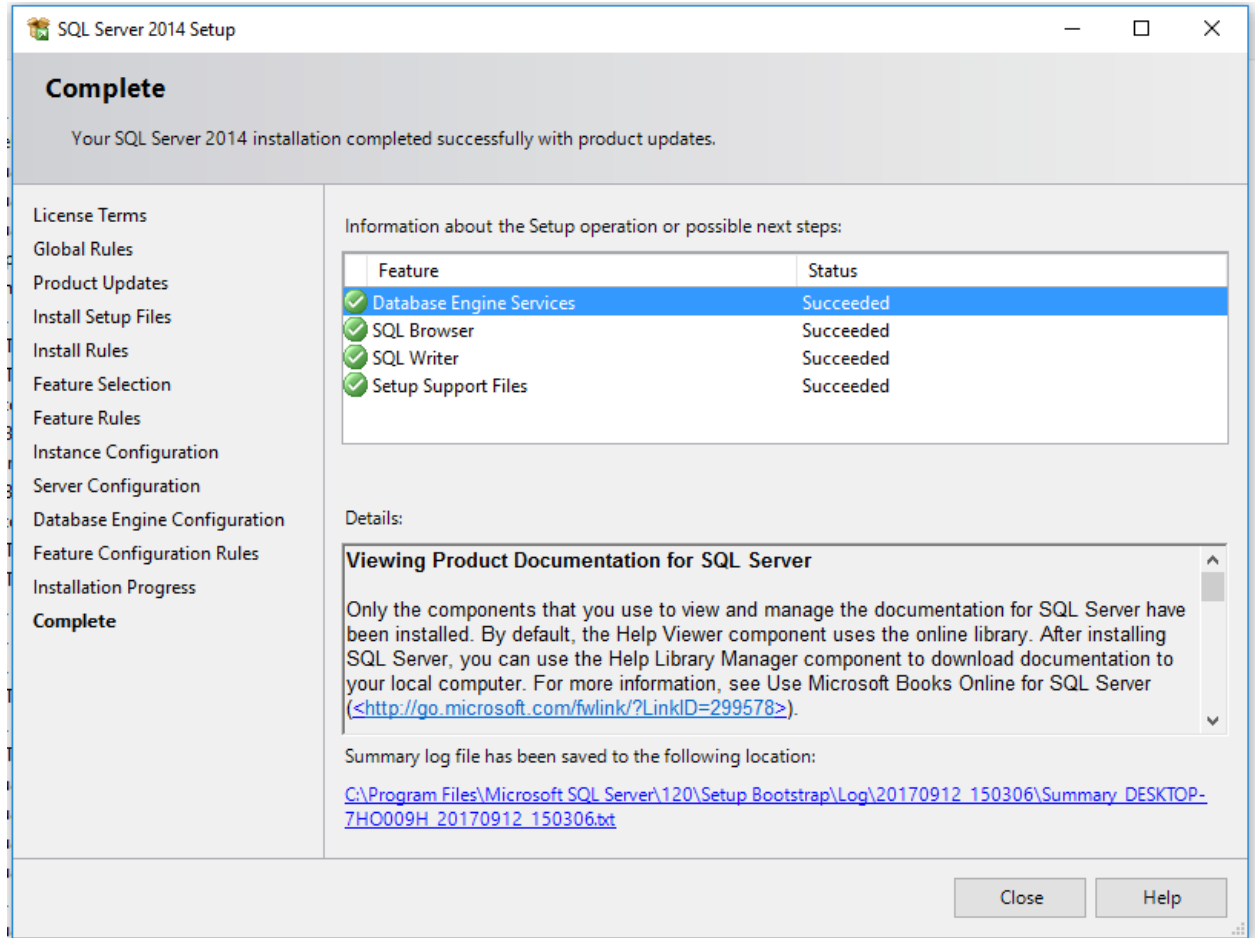
### Installation Progress

- License Terms
- Global Rules
- Product Updates
- Install Setup Files
- Install Rules
- Feature Selection
- Feature Rules
- Instance Configuration
- Server Configuration
- Database Engine Configuration
- Feature Configuration Rules
- Installation Progress**
- Complete

Install\_SqlSupport\_Cpu64\_Action : InstallFiles. Copying new files

Next >    Cancel    Help

16. Once the server installer is finished it will move to the 'Complete' screen. Click 'Close'.



17. The TigerTouch installer will install the TigerTouch program and show the finished screen. Click 'Closed' to finish.

