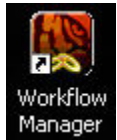


Running Workflow Manager on Windows 7

Method 1

For Workflow Manager to properly run on Windows 7, the programs must be run as **Administrator**, even if the user is a member of the Administrators group.



To run the program as an Administrator, the user must right-click the desktop icon and select the **Run as administrator** menu option.

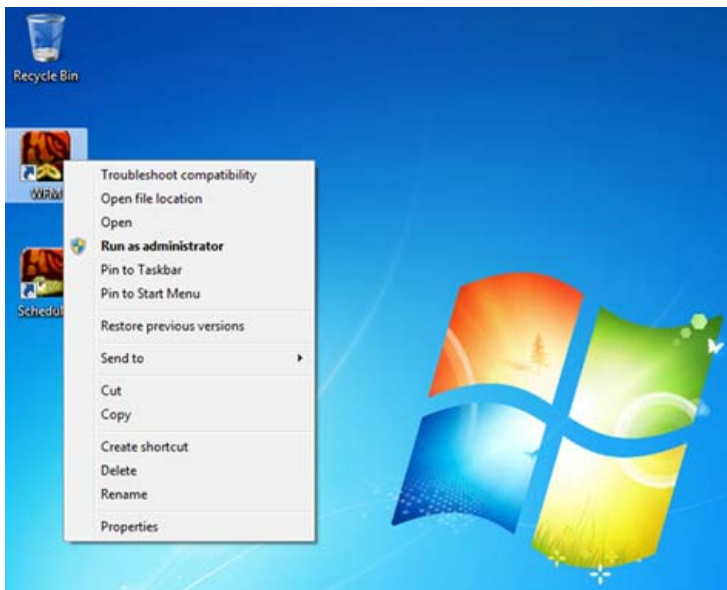
This presents a small issue with the Scheduler program as Workflow Manager starts it automatically when the user sends jobs to the Server.



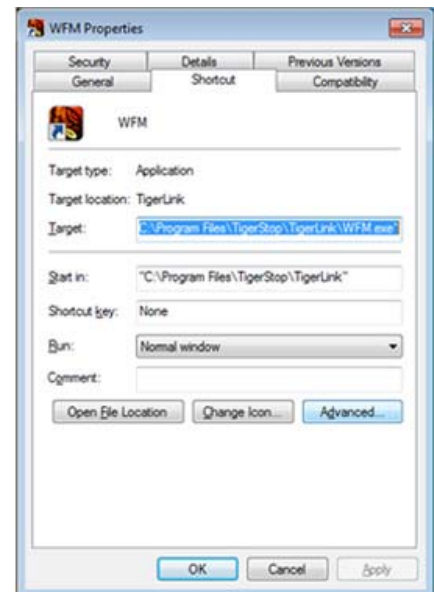
Using this method, the user must close the Scheduler, and then run it as **Administrator** from the desktop icon .

Method 2

This method addresses the issue of having to right-click the desktop icons and selecting the **Run as administrator** menu item.



1. Right-click the desktop icon and select the **Properties** menu item.



2. Click the **Advanced** button.



3. Check the box **Run as administrator** and click **OK**.

4. Then click **OK** on the remaining window.



The user can then double-click the desktop icon and run the program as normal.

By default the User Account Settings will warn the user that the program is going to make changes to their system, the user clicks **Yes** to allow the program to run.



© 2010 TigerStop LLC

TigerStop LLC, Assembly Plant, 12909 NE 95th Street, Vancouver, WA 98682 USA

Customer Service 360.448.6102 Fax 360.260.0755

Web www.tigerstop.com